

RANGE 8

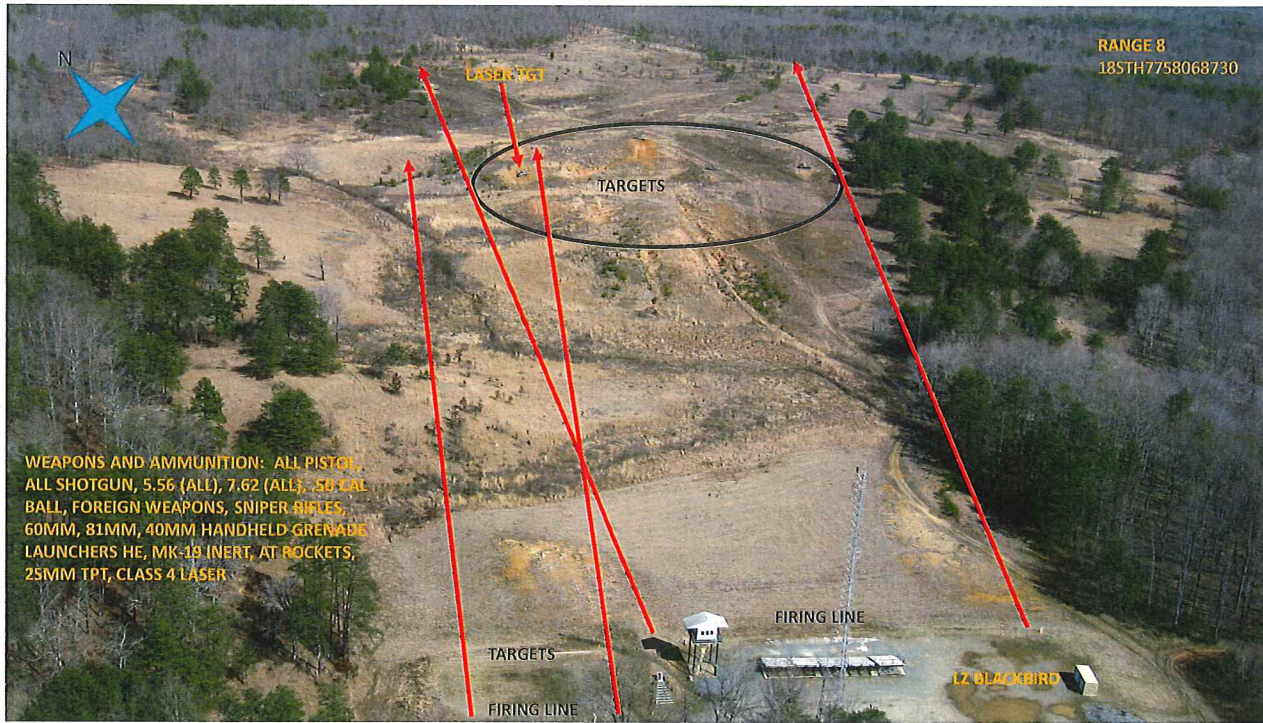
SOP

RANGE DESCRIPTION

Range 8 is an active; Machine Gun range located at Grid 77586873. It is accessible from route 610. There are eight firing points on Range 8. Max range is 568m

Primary Use: Machine Gun instruction, qualification and familiarization firing.

Alternate Uses: Mortar firing position



RANGE 8 OVERHEAD



RANGE 8 DOWNRANGE



RIGHT LATERAL LIMIT



LEFT LATERAL LIMIT



INFANTRY TARGETS



LASER TARGET



WEAPONS ACCOMMODATED	AMMUNITION AUTHORIZED
Service Pistols	.22, 9mm, .40, .45, .50
Service Rifles	5.56mm, 7.62MM
Service Shotgun	12 Gauge (All)
Handheld grenade launchers	40mm HE, HEDP, Smoke, Illum, Prac
Hand Grenades	Prac/Illum
Machine Guns	5.56, 7.62, .50 cal, 12.7, 14.5,
25mm Bushmaster (LAV)	TP only
MK-19	HE, HEDP, TP
Infantry Automatic Rifles	5.56, 7.62
Sniper Rifles	5.56, .308, .300, .50 cal (MK211)
SMAW	83mm HE/INERT rocket, spotter/trainer round
MAAWS	83mm HE/INERT rocket, spotter/trainer round
LAW	66mm rocket, 21mm trainer
AT-4	84mm HE/INERT rocket, spotter/trainer round
60mm Mortar	HE, Illum, Smoke
81mm Mortar	HE, Illum, Smoke
Foreign Weapons	All Up to 14.5mm
LASER	Class 4

Targets: Five tank hulks and multiple infantry targets.

ADDITIONAL RANGE INFORMATION:

PRIMARY DIRECTION of FIRE: East

RANGE USE RESTRICTIONS/COMMENTS

1. The only weapons and ammunition approved for use on this range are listed in this document. There shall be no deviations from or modification to the approved weapons and ammunition.
2. The Officer-in-Charge (OIC) shall be the rank of Staff Sergeant or above and will be certified in accordance with MCB Range Regulations. The Range Safety Officer (RSO) shall be the rank of Sergeant or above and will be qualified in accordance with MCB Range Regulations.
3. The OIC and RSO must be physically present on the range at all times during live fire training and events.
4. All brass, trash, targetry and materials will be removed completely at the end of training by the using unit. This includes any materials used to place targets on.
5. Ensure range flags are posted, ear protection is worn (eye protection for steel), safety brief is given, Range Control contacted and all fires are directed between the left and right lateral limits markers (black and white striped).
6. There is no movement authorized forward of the firing line. EOD support is required to go forward of the firing line.
7. If steel targets are used in conjunction with EOD support, they will not be fired on closer than 150m with 5.56mm or 7.62mm.
8. Fire and maneuver is not authorized.
9. On this range, there are targets placed for particular weapons systems. All users will ensure they do not engage targets closer than the minimum engagement distance for their weapon system and ammunition. Example: targets are placed within 200m for small arms, rockets and M203. They are not to be engaged with the MK-19 and HE/HEDP (310m minimum).
10. Class 3B and Class 4 LASERS are authorized on this range. They will be fired in accordance with the current LASER range survey report and the Range 8 LASER use restrictions. They will not be fired over the horizon under any circumstance. The only target approved for Class 3B and Class 4 LASERS is the far left tank hulk.

11. Units that have requested contractor support (i.e., automated targets, PITS targets, battlefield effects simulators, etc.) that are not present on the specified range within 1 hour of the requested time and have not contacted RMB/TSCQ will forfeit all contracted support for the day.

12. Units that have occupied a range with approved contractor support (i.e., automated targets, PITS targets, battlefield effects simulators, etc.) and that have not begun to use that support within 2 hours of the requested hour of operation will forfeit all contracted support for the day.

13. Units that are training with contractor support (i.e., automated targets, PITS targets, battlefield effects simulators, etc.) that place themselves voluntary into check fire for 2 hours during the approved support operational hours will forfeit all support for the day.

NOTE: Units that encounter situations where contractor support (i.e., automated targets, PITS targets, battlefield effects simulators, etc.) is delayed or interrupted by circumstances beyond the control of the requesting unit (i.e., RMB directed check fire, ASP support, MEDEVAC, etc.) must contact RMB/TSCQ in order to arrange continued support within the scope of the contract and available assets.

APPLICABLE MAP SHEET: All grid coordinates listed in this order apply to the Quantico Military Installation Map V834S Edition 4-NGA 1:25000.

FACILITIES:

Towers: 1
Sheds: 1
Ammo Breakdown table: 0
Parking: Yes, Approx 10 - 15 vehicles.
Bleachers: Yes
Head Facility: Port-A-Johns

UTILITIES AVAILABLE:

Electricity: Yes
Lights: None
Water System: None

INSTALLED COMMUNICATIONS: None

<u>Nearest MEDEVAC LZ:</u>	<u>MILES</u>	<u>GRID</u>
LZ Blackbird	0.0	77586873

Directions to MEDEVAC LZ: MEDEVAC LZ is located on Range 8.

LASERS AUTHORIZED: Up to class 3B and class 4 Lasers are authorized in accordance with the current MCB Laser Range Safety Survey Reports.

COMMUNICATION REQUIREMENTS:

1. A radio check is required immediately upon occupying any portion of the RTA, every 30 minutes in a live fire status and every 3 hours in a non-live fire status.
2. The Range Control Facility (RCF) Fire Desk Net Control call sign is "Range Control". Your call sign is "Range XX" (name of range, training area or facility unit is occupying).
3. The primary RCF Fire Desk Net Control frequencies are: ELMR talk group "RC Safety" (ground) and 323.7 AM UHF (air).
4. The secondary RCF Fire Desk Net Control is telephone, numbers: 703-784-5321 or 5322.
5. OIC/RSO will monitor the RCF primary and secondary Safety Nets at all times. Instant communication is required.
6. Any unit with organic ELMR radios will have their ELMR radios programmed with the "RC Safety" talk group and use those radios as their primary means of communication within the RTA.
7. Units without organic ELMR assets will be issued ELMR radios from RMB upon check-in.
8. Approved Non-ELMR radios are only authorized for internal communication (ground).
9. If the RCF cannot reach a unit within the RTA via primary communication, the unit will be contacted via the secondary means of communication.
10. Upon loss of primary communication the OIC/RSO will initiate a "check fire"/cease training status and will contact the RCF via secondary communication. This communication will be maintained while primary communication is being restored. Units may only resume firing/training once primary communication has been re-established and clearance is granted by the RCF.

INJURY CLASSIFICATIONS:

Injuries are classified into the following categories in order to aid in casualty evacuation from the RTA.

1. ROUTINE. Routine injuries are those injuries that are not threatening to life, limb or eyesight; and conditions or illnesses treatable by medication or procedures available at the base medical facilities.

2. PRIORITY. Priority injuries are those injuries that require immediate medical attention but are not threatening to life, limb, or eyesight if treated promptly.

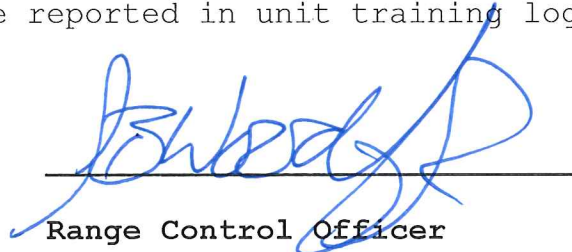
3. URGENT. Urgent injuries are severe injuries that are threatening to life, limb, or eyesight and require immediate medical attention.

4. MASS CASUALTY. A mass casualty is a series of injuries with multiple priority and urgent medical patients.

MEDICAL EVACUATION (MEDEVAC) PROCEDURES:

1. Injury occurs.
2. Range immediately cease-fires.
3. Medical support evaluates/treats injured personnel.
4. Range OIC/RSO notifies the RCF of the injury, is the victim conscious/unconscious and what type of MEDEVAC transportation is requested (ground/air).
5. The OIC/RSO must maintain constant radio contact with Range Control and awaits further instructions.

*Minor injuries and illnesses not requiring medical services need not be reported to the RCF but should be reported in unit training logs.



Range Control Officer

Date: 21 SEPT 2017